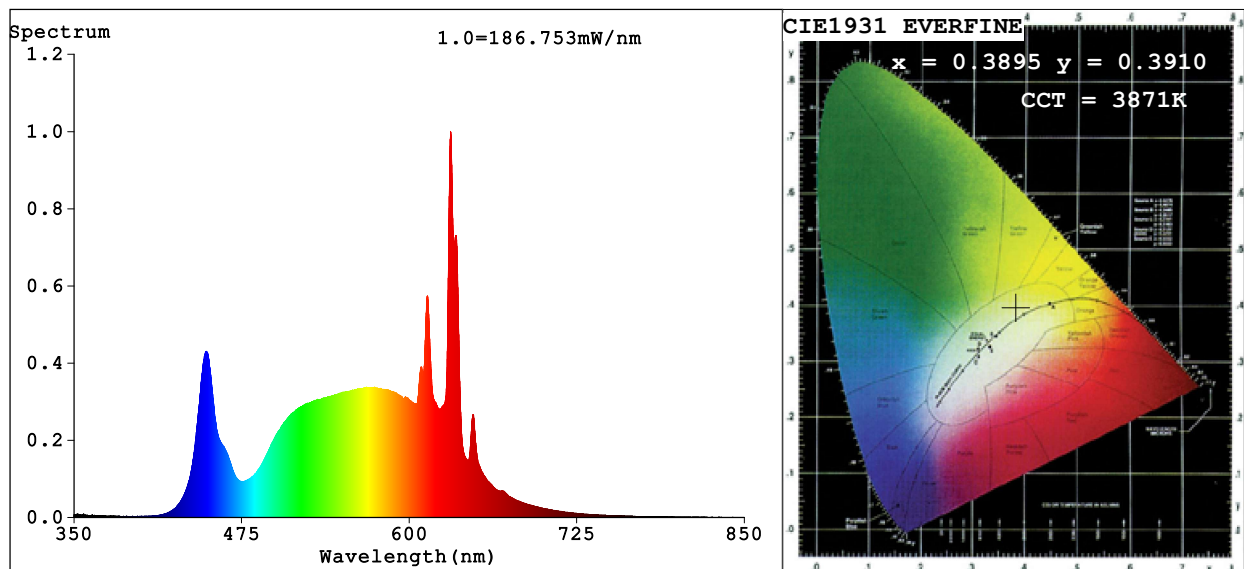


Spectrum Test Report



Color Parameters:

Chromaticity Coordinate: $x=0.3895$ $y=0.3910$ $u'=0.2254$ $v'=0.5090$
 CCT=3871K (Duv=0.0040) Dominant WL:Ld =577.7nm Purity=34.2%
 Ratio:R=20.1% G=76.6% B=3.3%; Peak WL:Lp=630.9nm FWHM=8.1nm
 Render Index:Ra=91.3 CRI=87.1 TM30:Rf=91 Rg=101
 R1 =92 R2 =92 R3 =90 R4 =93 R5 =91 R6 =89 R7 =95
 R8 =88 R9 =64 R10=79 R11=93 R12=68 R13=91 R14=94 R15=89

Photo Parameters:

Flux = 4209 lm Eff. : 135.00 lm/W Fe = 12.39 W

Electrical parameters:

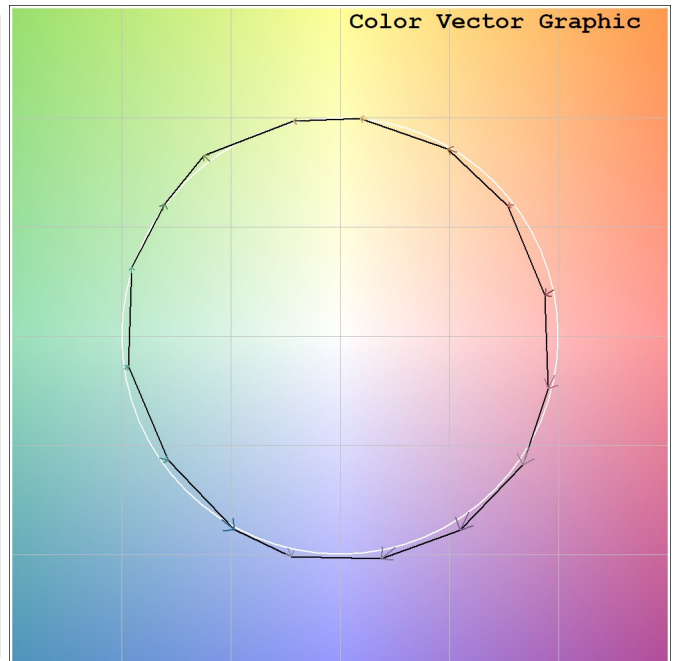
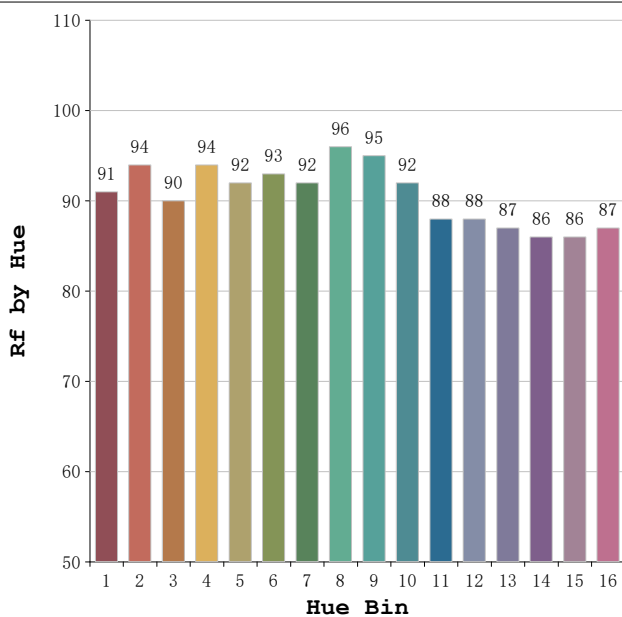
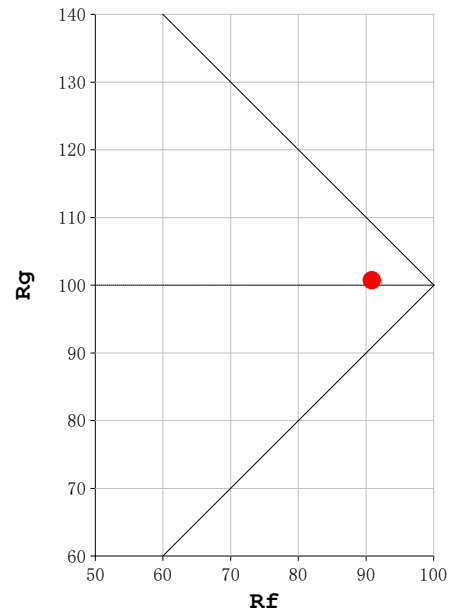
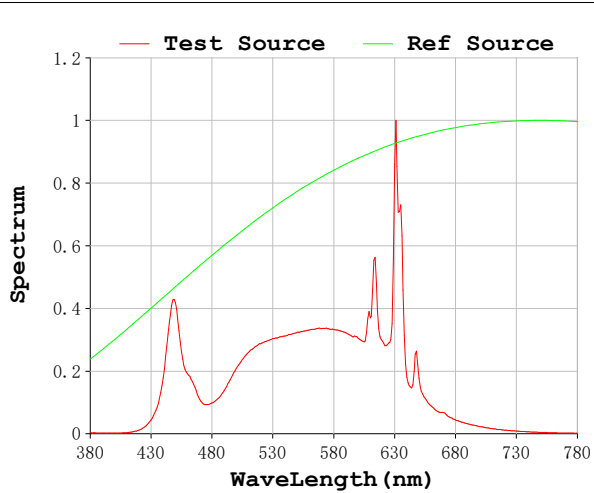
V = 230.06 V I = 0.1411 A P = 31.18 W PF = 0.9607

Status: Integral T = 167 ms Ip = 50847 (78%)

Model:Spotia 30w Blanco
 Tester:Sergio Carneros
 Temperature:20Deg
 Manufacturer:Luz Negra

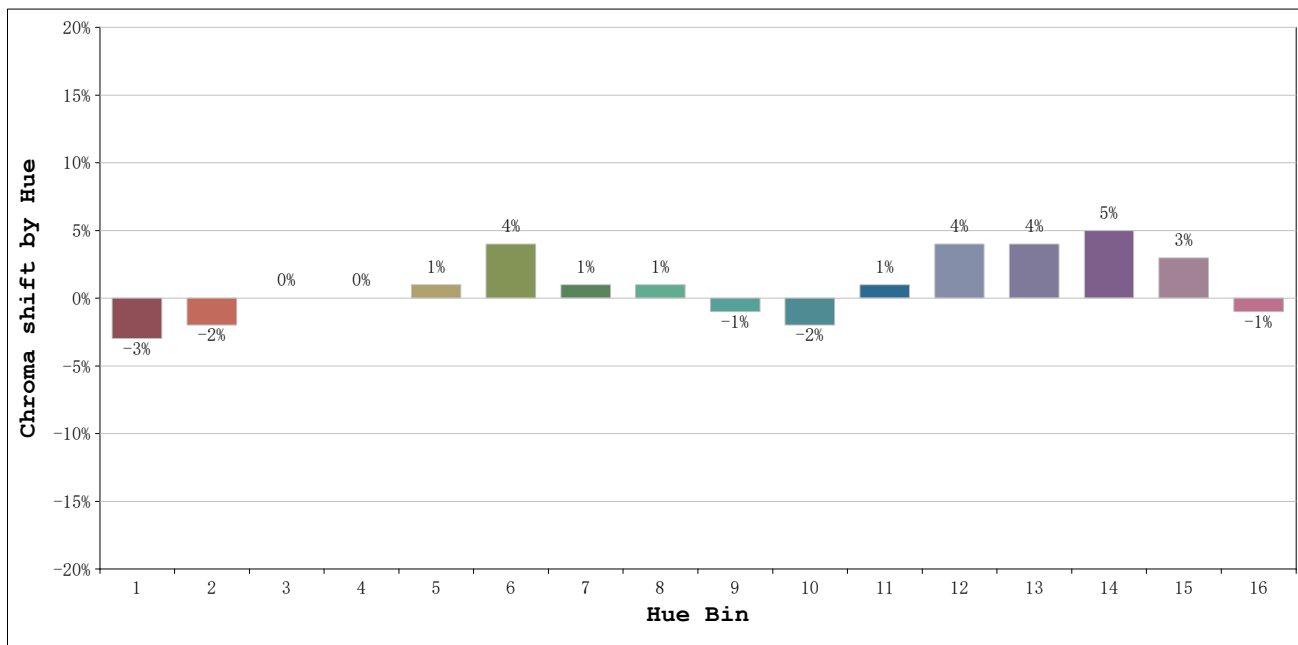
Number:4000k 36°
 Date:2026-03-23 11:28:47
 Humidity:50%
 Remarks:1 unidad

Rf: 91 **CCT: 3871 K** **u': 0.2254**
Rg: 101 **Duv: 0.0040** **v': 0.5090**



Model:Spotia 30w Blanco
 Tester:Sergio Carneros
 Temperature:20Deg
 Manufacturer:Luz Negra

Number:4000k 36°
 Date:2026-03-23 11:28:47
 Humidity:50%
 Remarks:1 unidad



			Graphic shift(%)	
Hue Bin	Hue Angle	Rf	Chroma	Hue
1	0.0° - 22.5°	91	-3	-1
2	22.5° - 45.0°	94	-2	1
3	45.0° - 67.5°	90	0	4
4	67.5° - 90.0°	94	0	3
5	90.0° - 112.5°	92	1	3
6	112.5° - 135.0°	93	4	1
7	135.0° - 157.5°	92	1	-2
8	157.5° - 180.0°	96	1	-1
9	180.0° - 202.5°	95	-1	0
10	202.5° - 225.0°	92	-2	3
11	225.0° - 247.5°	88	1	7
12	247.5° - 270.0°	88	4	2
13	270.0° - 292.5°	87	4	-6
14	292.5° - 315.0°	86	5	-7
15	315.0° - 337.5°	86	3	-7
16	337.5° - 360.0°	87	-1	-5

Model:Spotia 30w Blanco
 Tester:Sergio Carneros
 Temperature:20Deg
 Manufacturer:Luz Negra

Number:4000k 36°
 Date:2026-03-23 11:28:47
 Humidity:50%
 Remarks:1 unidad